

Imagery ©2019, DigitalGlobe, IMTCAN Google

Imagery ©2019, DigitalGlobe, IMTCAN Google

OLD ORCHARD RD

OLD ORCHARD RD

INDUSTRIAL BAY

114 W/76
217201/1165

114 W/76

114 W/76
217201/1165

114 W/76
217201/1165

114 W/76
217201/1165

114 W/76

12.4

12.3

12.1

12.0

12.2

12.3

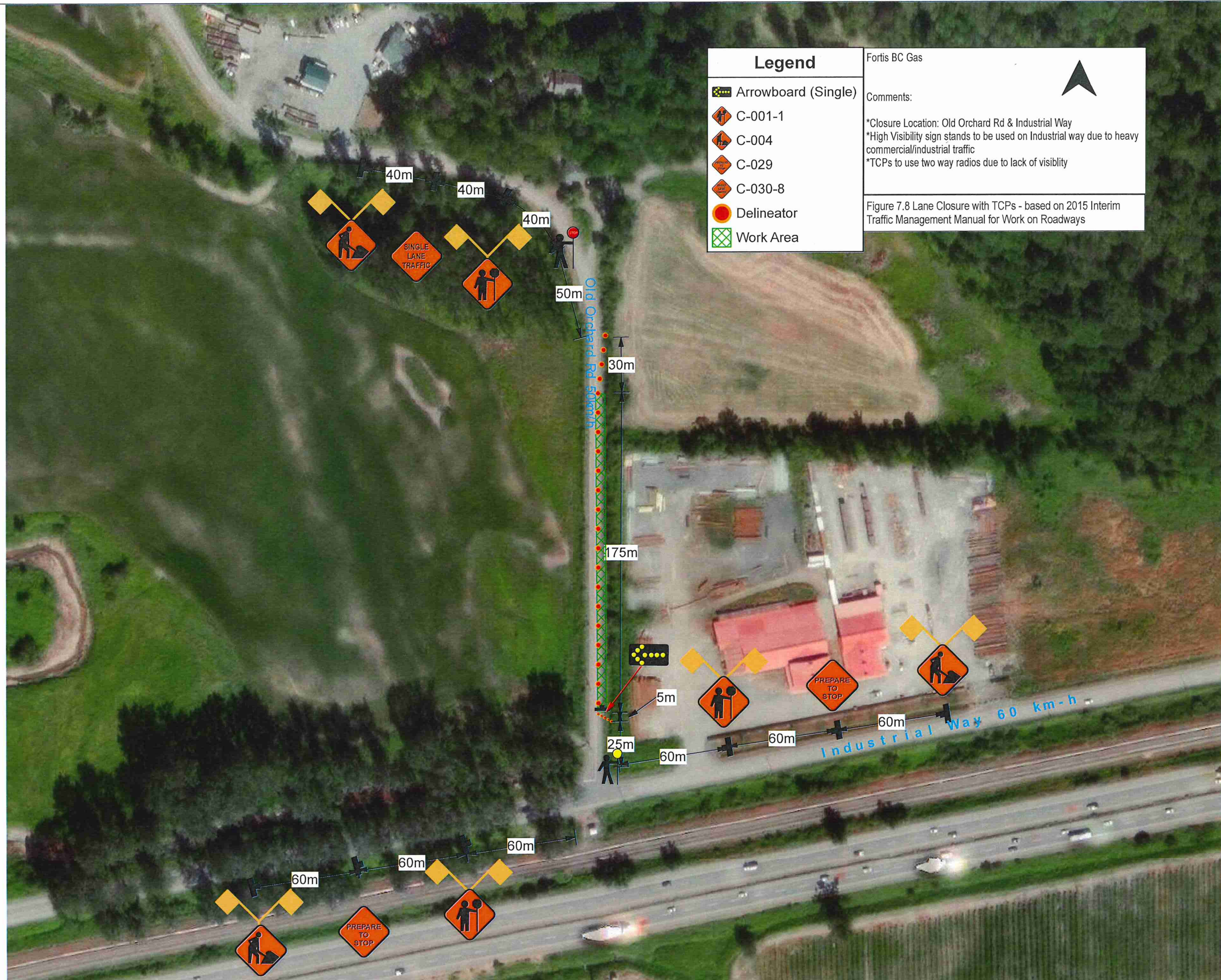
12.4

12.5



Scale: 1:1,500
0 20 40 80 m
Data accuracy not guaranteed





Legend	
	Arrowboard (Single)
	C-001-1
	C-004
	C-029
	C-030-8
	Delineator
	Work Area

Fortis BC Gas

Comments:

- *Closure Location: Old Orchard Rd & Industrial Way
- *High Visibility sign stands to be used on Industrial way due to heavy commercial/industrial traffic
- *TCPs to use two way radios due to lack of visibility

Figure 7.8 Lane Closure with TCPs - based on 2015 Interim Traffic Management Manual for Work on Roadways

